

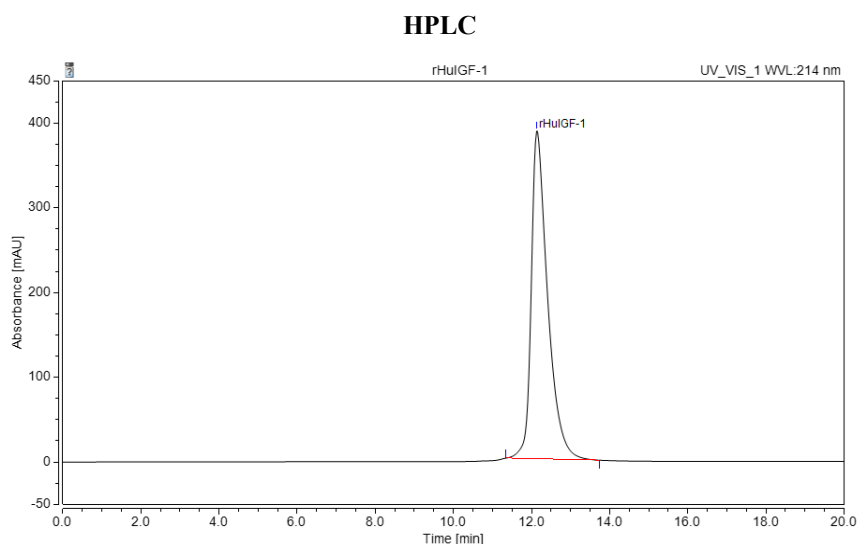
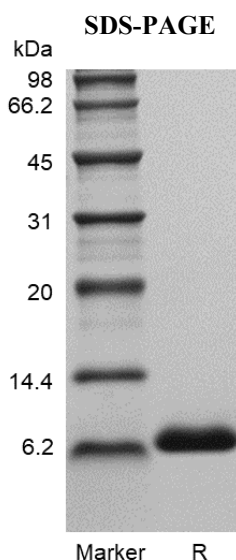
# Recombinant Human Insulin-like Growth Factor-1 GMP (rHuIGF-1 GMP)

## PrimeGene Technical DataSheet

<b>Catalog Number:</b>	GMP-105-01
<b>Source:</b>	<i>Escherichia coli</i>
<b>Molecular Weight:</b>	Approximately 7.6 kDa, a single non-glycosylated polypeptide chain containing 70 amino acids.
<b>Size:</b>	5 µg/100 µg/1 mg
<b>Sequence:</b>	GPETLCGAEL VDALQFVCGD RGFYFNKPTG YGSSRRAPQ TGIVDECCFR SCDLRRLEMY CAPLKPAKSA
<b>Purity:</b>	> 98% by SDS-PAGE and HPLC analyses.
<b>Biological Activity:</b>	Fully biologically active when compared to standard. The ED <sub>50</sub> as determined by a cell proliferation assay using serum free human MCF-7 cells is less than 2 ng/mL, corresponding to a specific activity of > 5.0 × 10 <sup>5</sup> U/mg.
<b>Physical Appearance:</b>	Sterile filtered white lyophilized (freeze-dried) powder.
<b>Formulation:</b>	Lyophilized from a 0.2 µm filtered concentrated solution in PBS, pH 7.0.
<b>Endotoxin:</b>	Less than 0.01 EU/µg of rHuIGF-1 GMP as determined by LAL method.
<b>Sterility:</b>	Negative.
<b>Mycoplasma:</b>	Negative.
<b>Host Cell Protein:</b>	Less than 0.05% when tested by ELISA.
<b>Host Cell DNA:</b>	Less than 20 ng/mg when tested by qPCR.
<b>In Vitro Virus Assay:</b>	Negative.
<b>Reconstitution:</b>	Prior to opening, it is recommended to centrifuge the vial briefly to bring the contents down the bottom. Reconstitute in sterile distilled water or aqueous buffer containing 0.1% BSA to a concentration of 0.1-1.0 mg/mL. If animal-origin-free condition is expected in your product, then sterile distilled water is recommended. Stock solutions should be apportioned into working aliquots and stored at ≤ -20 °C. Further dilutions should be made in appropriate buffered solutions.
<b>Shipping:</b>	The product is shipped with polar packs. Upon receipt, store it immediately at the temperature recommended below.
<b>Stability &amp; Storage:</b>	<b>Use a manual defrost freezer and avoid repeated freeze-thaw cycles.</b> <ul style="list-style-type: none"><li>● A minimum of 12 months from date of receipt, when stored at ≤ -20 °C as supplied.</li><li>● 1 month, 2 to 8 °C under sterile conditions after reconstitution.</li><li>● 3 months, -20 to -70 °C under sterile conditions after reconstitution.</li><li>● Refer to lot-specific CoA for the Expiry Date.</li></ul>
<b>Usage:</b>	This material is offered by Shanghai PrimeGene Bio-Tech for research, laboratory, or further evaluation purposes. <b>NOT FOR HUMAN USE.</b>
<b>Quality Statement:</b>	<b>The manufacturing and testing of these products comply with ICH Q7 guidelines.</b>

# Recombinant Human Insulin-like Growth Factor-1 GMP (rHuIGF-1 GMP)

PrimeGene Technical DataSheet



## Background:

The insulin-like growth factors (IGFs) belonged to the insulin gene family, are mitogenic polypeptide growth factors that stimulate the proliferation and survival of various cell types including muscle, bone, and cartilage tissue in vitro. The IGFs are similar by structure and function to insulin, but have a much higher growth-promoting activity than insulin. IGF-1 is produced primarily by the liver as an endocrine hormone as well as in target tissues in a paracrine/autocrine fashion. The production of IGF-1 is stimulated by growth hormone (GH) and can be retarded by undernutrition, growth hormone insensitivity, lack of growth hormone receptors, or failures of the downstream signaling pathway post GH receptor including SHP2 and STAT5B. Recombinant human IGF-1 are globular proteins containing 70 amino acids and 3 intra-molecular disulfide bonds. Mature human IGF-1 shares 94% and 96% a.a. sequence identity with mouse and rat IGF-1, respectively, and exhibits cross-species activity.

Rev. 06/13/2023 V.5